

**Tillbridge Solar Project
EN010142**

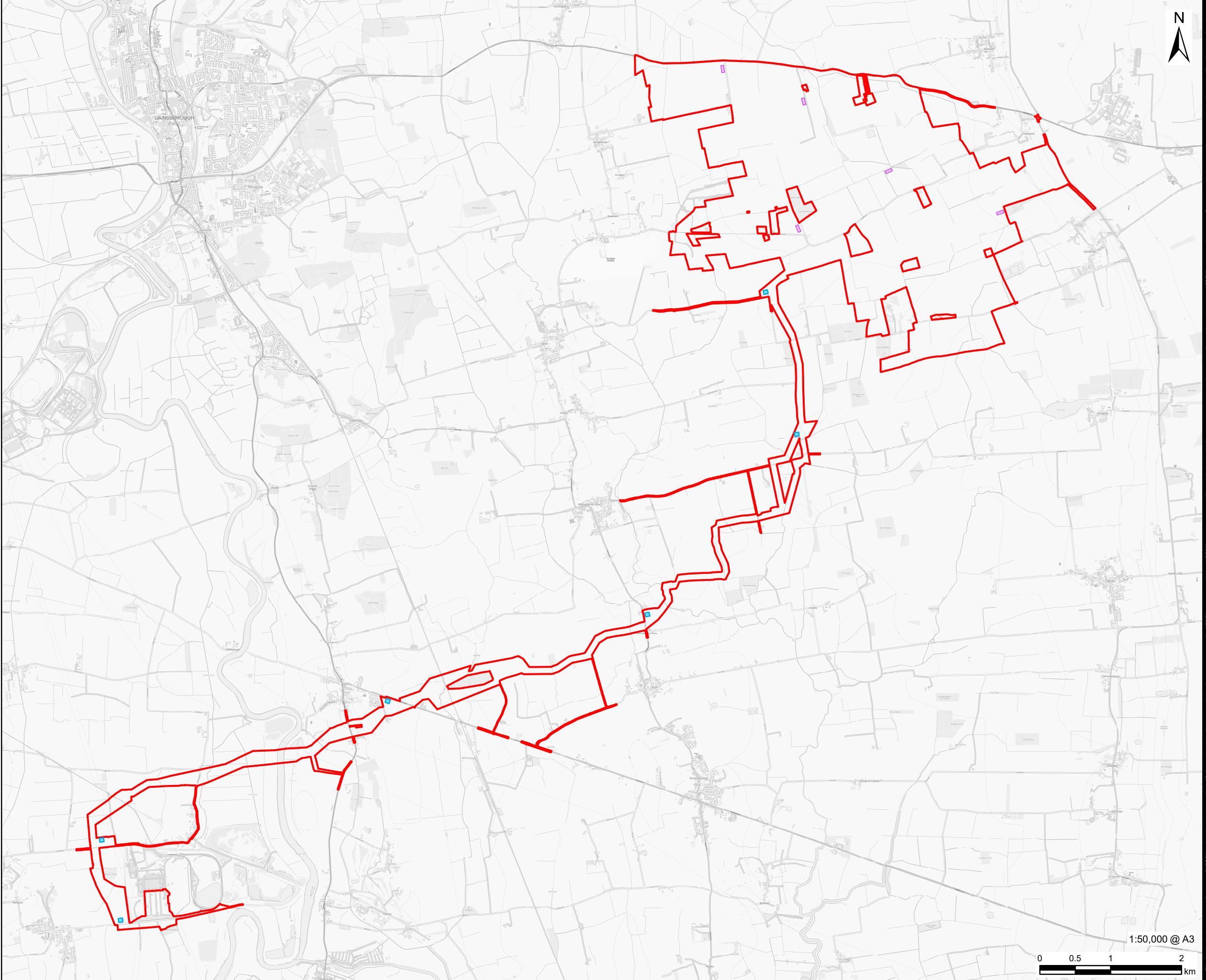
**Volume 6
Environmental Statement**
Figure 3-6: Indicative Construction Compound Locations
Document Reference: EN010142/APP/6.3

**Regulation 5(2)(a)
Infrastructure Planning (Applications: Prescribed Forms and
Procedure) Regulations 2009**

**April 2024
Revision Number: 00**

tillbridgesolar.com

Filename: I:\na.aecomnet.com\is\EMEALondon-UK\LON06Legacy\UKLON06PPFSW001-1\VDPELibrary\GIS_DATA\Projects\Greta III\Layout\Tillbridge Solar\ES_Figures3-6_ConstructionCompoundLocations.mxd
Revision: 0 Drawn: LL Checked: CW Approved: AT Date: 2024-03-18



AECOM
PROJECT
Tillbridge Solar Project

CLIENT
Tillbridge Solar Ltd

CONSULTANT
Aldgate Tower
2, Leman Street
London, E1 8FA
United Kingdom
T +44-0207-645-2000

LEGEND
Order limits
Construction Compound - Principal Site
Construction Compound - Cable Route Corridor

NOTES
Contains Ordnance Survey Data © Crown Copyright and database right 2024. Ordnance Survey 0100031673.
Location and sizing of construction compounds is indicative only and will be confirmed at detailed design stage

ISSUE PURPOSE
DCO Submission

PROJECT NUMBER
60677969

FIGURE TITLE
Indicative Construction Compound Locations

FIGURE NUMBER
Figure 3-6

1:50,000 @ A3
0 0.5 1 2 km

This drawing has been prepared by the use of AECOM's client. It may not be used, modified, reproduced or relied upon by third parties, except as agreed by AECOM or as required by law. AECOM accepts no responsibility, and denies any liability whatsoever, to any party that uses or relies on this drawing without AECOM's express written consent. Do not scale this document. All measurements must be obtained from the stated dimensions.